



LABORATÓRIO DE INSTRUMENTAÇÃO  
E FÍSICA EXPERIMENTAL DE PARTÍCULAS  
*partículas e tecnologia*

# Developing a distributed and fault tolerant Dataverse architecture.



# National Distributed Computing Infrastructure

Services: scientific computing, data processing and data storage

Target: scientific and academic community, infrastructures, R&I projects, SMEs

Promote: shared resources, advanced computing and data services for research

Interface: international digital infrastructures (EGI, IBERGRID, WLCG, EOSC)



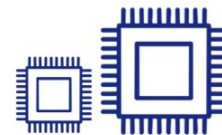
## Cloud Computing

cloud computing



## HTC Computing

high throughput  
computing (GRID)

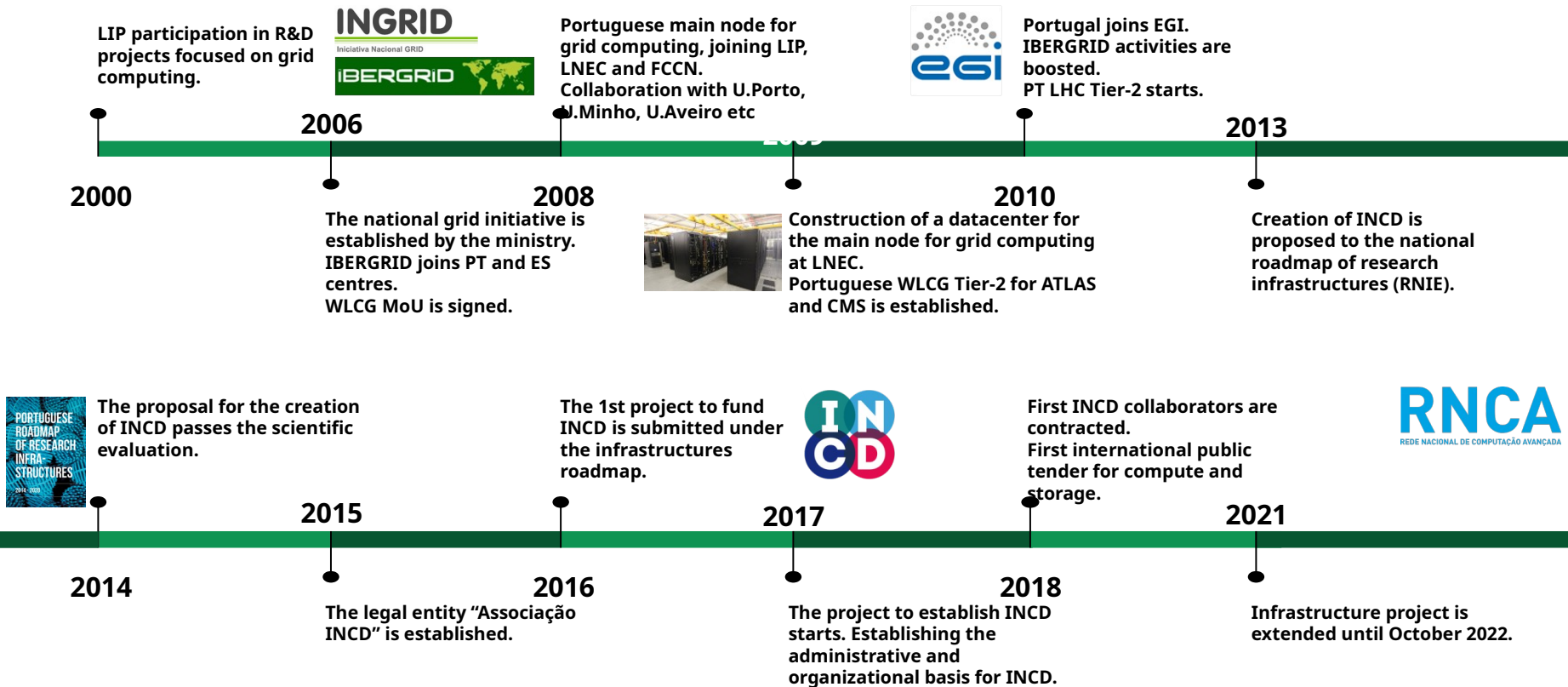


## HPC Computing

high performance  
computing



# More than 20 years of experience



# Our challenges.

- Dataverse Service for National Scientific Computation Foundation;
- Fault tolerant service;
- No single point of failure;
- High availability.

# Our issues.

- No recipe to elaborate on;
- Package installations not flexible enough;
- Expandable storage – local/S3/swift/minio;
- Distributed database;
- SOLR index – standalone vs distributed;
- Server role shifting.

# Our drawbacks.

- Trial and error advanced installation;
- Existing docker recipe not what we intended;
- Storage direct upload/download issues with S3/swift;
- Postgres documentation lacking solutions;
- Distributed SOLR index was cumbersome;
- Server role shifting demands intervention.

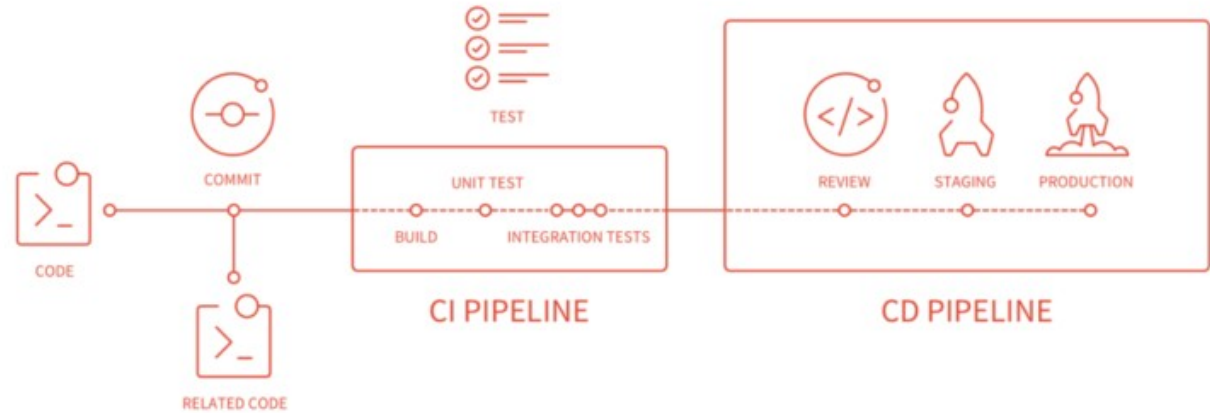
# Our solutions.

- Created our own recipe / pipeline;
- Docker containers;
- Minio;
- pg\_auto\_failover;
- Standalone SOLR
- Keepalived/VIP.

# The gitops approach

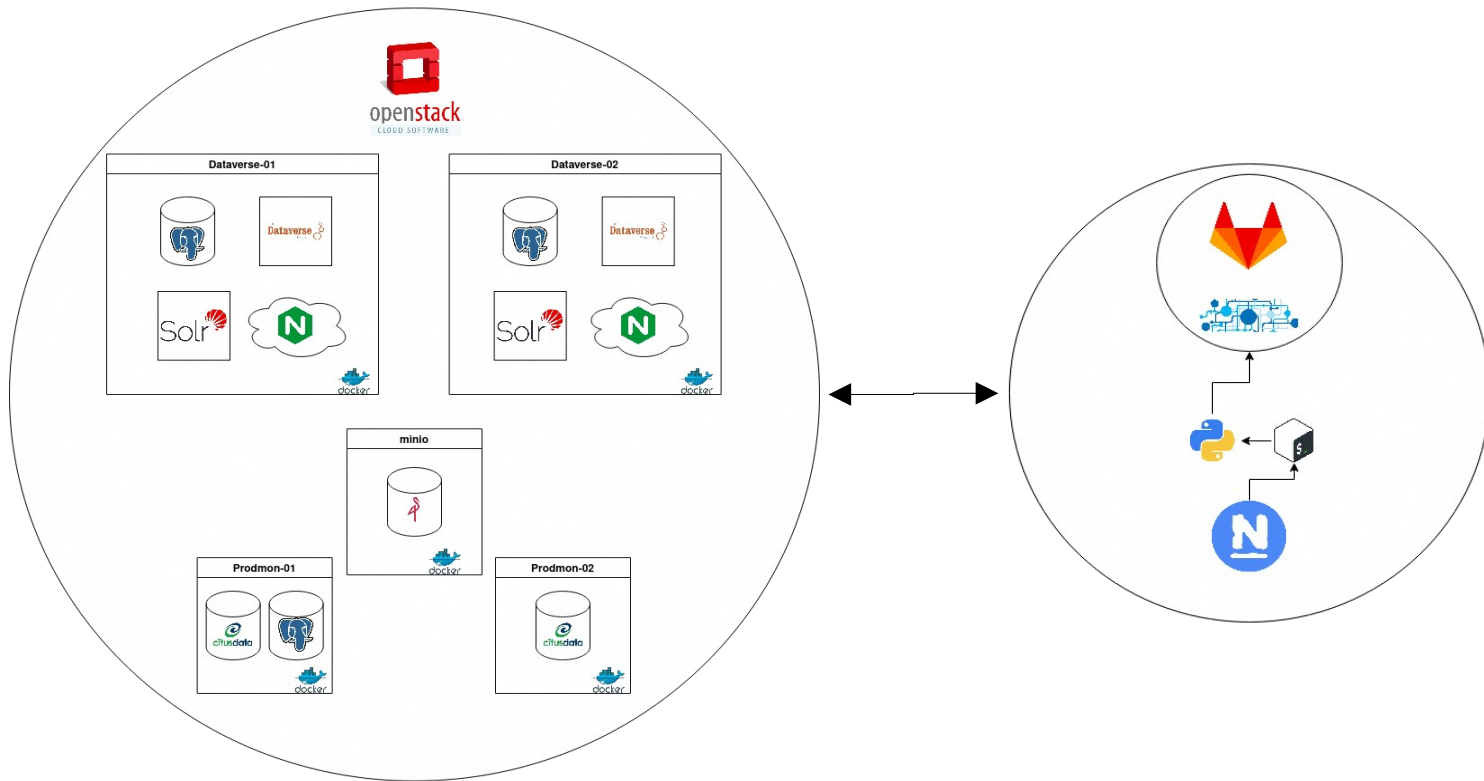


# GitLab CI



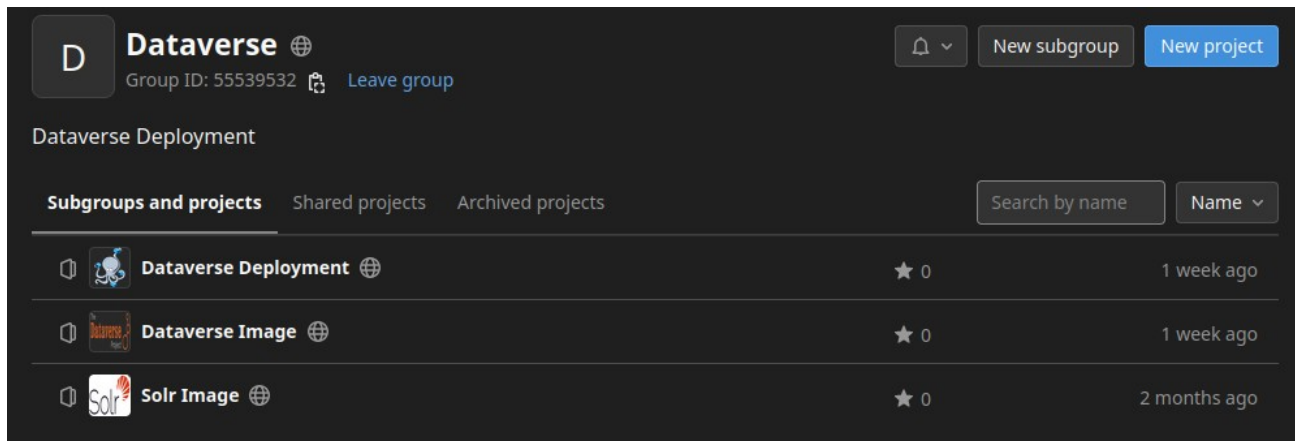


# Dataverse Distributed Architecture






# Our one stop shop solution

<https://gitlab.com/lip-computing/dataverse>



The screenshot shows the GitLab interface for the 'Dataverse' group. At the top, there is a group header with the name 'Dataverse', a globe icon, a notification bell, and buttons for 'New subgroup' and 'New project'. Below this, the group ID '55539532' and a 'Leave group' link are visible. The main content area is titled 'Dataverse Deployment' and features tabs for 'Subgroups and projects', 'Shared projects', and 'Archived projects'. A search bar and a dropdown menu for 'Name' are also present. The list of subgroups and projects includes:

Icon	Name	Stars	Last Updated
	Dataverse Deployment	0	1 week ago
	Dataverse Image	0	1 week ago
	Solr Image	0	2 months ago



# Thanks

Any questions?

You can find me at [zacarias@lip.pt](mailto:zacarias@lip.pt)